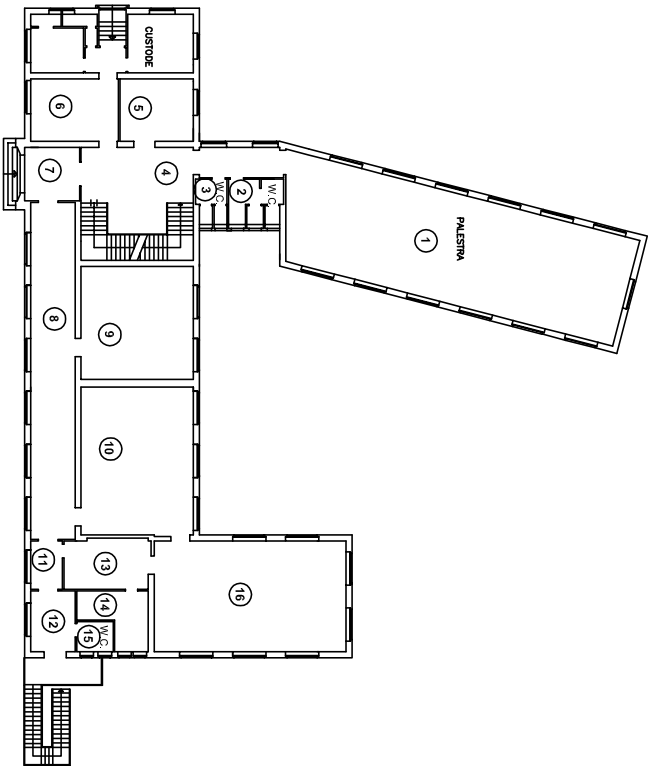
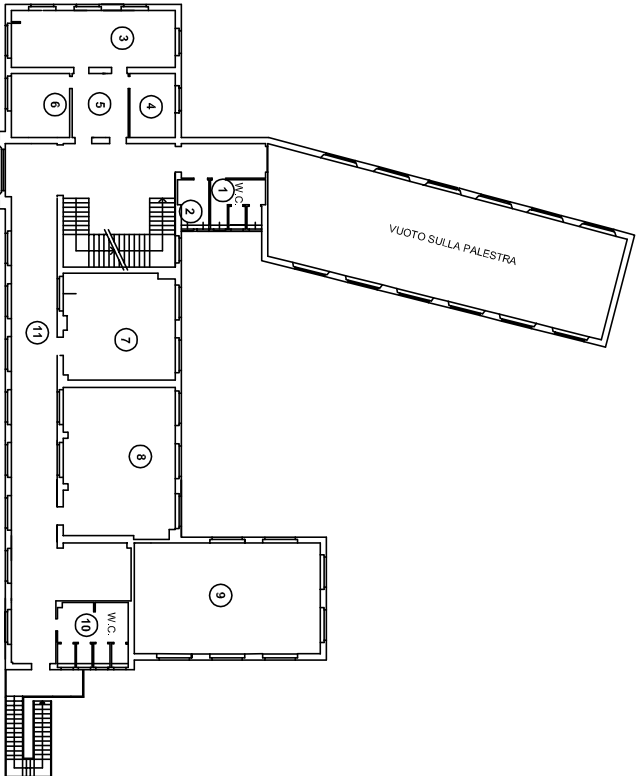


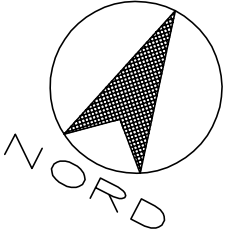
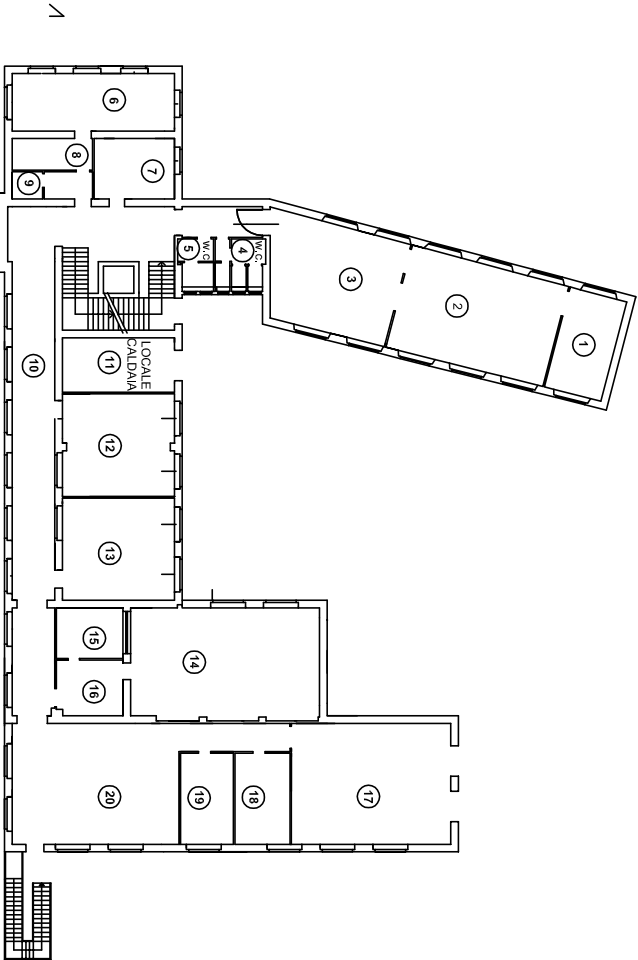
PIANTA PIANO RIALZATO




PIANTA PIANO PRIMO



PIANTA PIANO SEMINTERRATO



	OGGETTO:  <b>Istituto Tecnico Industriale "Omar" succursale - Novara</b>			TAVOLA:  <b>02</b>
	DIRIGENTE CAPO SETTORE: <b>Ing. Mario GEDDO</b>	DIRIGENTE SERVIZIO TECNICO: <b>Arch. Alfredo MALANDRA</b>	DISEGNATORE:	
	FASE:	DATA: <b>Gennaio 2006</b>	NOME FILE:	
	TITOLO:  <b>Piante piano seminterrato, rialzato e terra</b>			
SETTORE TECNICO EDILIZIA				SCALA: <b>1:500</b>